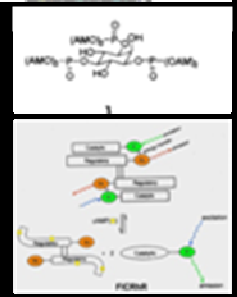
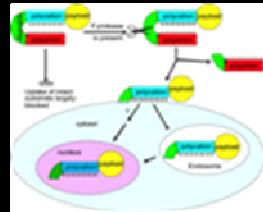
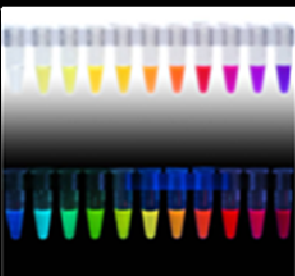
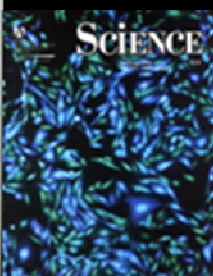
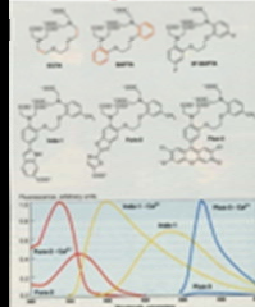
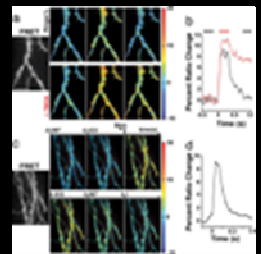
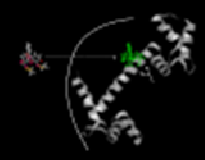
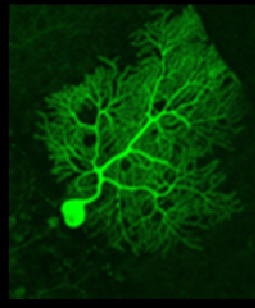
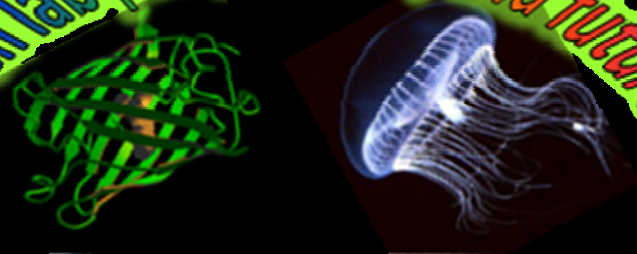


# The Revolution in Fluorescence Imaging: Tsien lab past, present, and future



February 17-18, 2009

# A Revolution in Fluorescence Imaging: Tsien Lab Past, Present, and Future

**February 17, 2009**

**Price Center East Ballroom**

**8:15-8:45** Check-in and Continental Breakfast

**9:00 -9:05** Varda Levram–Ellisman *Opening*

**9:05-9:15** Palmer Taylor *Introduction*

## Designing the Next Generation of Genetically Encoded Sensors

**Chair:** Michael Lin

**9:15-9:30** Roger Heim *FRET for Compound Screening at Aurora/Vertex*

**9:30-9:45** Amy Palmer *Designing and Using Genetically Encoded Sensors: Lessons I Learned from Roger*

**9:45-10:00** Robert Campbell *Beyond Brightness: Colony Screens for Fluorescent Protein Photo Stability and Biosensor FRET Changes*

**10:00-10:15** Colette Dooley *GFP Sensors for Reactive Oxygen Species: Tying up Loose Ends and Looking Forward*

**10:15-10:30** Peter Wang *Fluorescent Proteins and FRET Biosensors for Visualizing Cell Motility and Mechanotransduction*

**10:30-11:00** Coffee Break

## Fluorescent Proteins in Neuroscience

**Chair:** Varda Levram-Ellisman

**11:00-11:15** Brian Bacskai *Aberrant Calcium Homeostasis in the Alzheimer Mouse Brain*

**11:15-11:30** Andrew Hires *Watching a Mouse Think: Novel Fluorescent Genetically-Encoded Calcium Indicators Applied to In Vivo Brain Imaging*

**11:30-11:45** Alice Ting *Imaging Synapse Development with Engineered Fluorophore Ligases*

**11:45-12:00** Rex Kerr *3D Calcium Imaging in C. elegans*

## Clinical Applications

**Chair:** Tao Jiang

**12:00-12:15** Todd Aguilera *Activatable Cell Penetrating Peptides for Use in Clinical Contrast Agent and Therapeutic Development*

**12:15-12:30** Quyen Nguyen *Surgery with Molecular Fluorescence Imaging Guidance*

**12:30-1:30** Lunch break

## Imaging Probes: The Chemist's View

**Chair:** Stephen Adams

**1:30-1:45** Tito Gonzalez *Voltage-Sensitive FRET Probes & Applications*

**1:45-2:00** Paul Negulescu *From Watching Ions to Moving Them*

**2:00-2:15**    **Timothy Dore**    *Roger-Inspired Photochemistry: Releasing Biological Effectors with 2PE*

- 2:15-2:30 Joe Kao *Electron Paramagnetic Resonance Imaging in Living Animals*
- 2:30-2:45 Brent Martin *Chemical Probes for Studying Protein Acylation*
- 2:45-3:00 Jianghong Rao *Non-GFP Based Probes for Imaging of the Hydrolytic Enzyme Activity*
- 3:00-3:30 Coffee break

### Cellular Research with and without Fluorescent Probes

Chair: Mike Whitney

- 3:30-3:45 Carsten Schultz *Cell Membrane Repair Visualized by GFP Fusion Proteins*
- 3:45-4:00 David Green *Transcriptomes and Systems Biology: Application to Early Mammalian Embryogenesis*
- 4:00-4:15 Clotilde Randriamampita *Paradoxical Aspects of T cell Activation Revealed with Fluorescent Proteins*
- 4:15-4:30 Wen-Hong Li *Studying Dynamic Cell-Cell Communication In Vivo by Trojan-LAMP*
- 4:30-4:45 Martin Poenie *Aim and Shoot: Two Roles for Dynein in T cell Effector Function*
- 4:45-5:00 Gregor Zlokarnik *From Bla to Blah, Blah in 20 Years*
- 5:00-5:15 Presentation by Jim Sharp, President, Carl Zeiss MicroImaging

Optional remarks by Roger Tsien

### 7:00-11:00 Private dinner for past and present members of the Tsien Lab at the Faculty Club, Atkinson Pavilion

**February 18, 2009**

**at Leichtag Lecture Hall (107)**

- 8:15-8:45 Continental breakfast

### Cellular Research with and without Fluorescent Probes

Chair: David Green

- 9:00-9:15 David Zacharias *Fluorescent Proteins, Palmitoylation and Cancer: Two Out of Three Ain't Bad*
- 9:15-9:30 Jin Zhang *Visualization of Cell Signaling Dynamics: A Tale of MAPK*
- 9:30-9:45 Paul Sammak *Nuclear Organization and Movement in Pluripotent Stem Cells Measured by Histone GFP H2B*

### Branching Out

Chair: Joan Kanter

- 9:45-10:00 Yong Yao *NIH Toolbox Program*
- 10:00-10:15 Oded Tour *The Tour Engine - A Novel Internal Combustion Engine with the Potential to Boost Efficiency and Cut Emissions*
- 10:15-10:45 Coffee break

## Into the Future

Chair: Tito Gonzalez

10:45-11:00 Xiaokun Shu *Visibly and Infrared Fluorescent Proteins: Photophysics and Engineering*

11:00-11:15 Michael Lin *Engineering Fluorescent Proteins for Visualizing Newly Synthesized Proteins and Improving FRET-Based Biosensors*

11:15-11:30 Jeremy Babendure *Training Our Next Generation of Fluorescent Protein Enthusiasts*

Optional remarks by Roger Tsien

Group Photo

## Break

4:00-5:00 Roger Tsien Chancellor invitational lecture 2008 Nobel Prize in Chemistry  
Price Center Theater Open to the public

*Painting Cell Signals with a Palette of Fluorescent Proteins*

5:00 Chancellor's Reception at The Loft - Price Center East (by Chancellor invitation only)



We make it visible.



**OLYMPUS**

Your Vision, Our Future



AVALON VENTURES

